

# **LINEX** Sheave Liners

LINEX™ liners are designed and manufactured to equip and protect sheaves of chairlifts, gondolas, cable cars, funiculars, 3S, and other ropeways



CE marking



High-quality elastomers



Stored in USA

# LINEX™

## TECHNICAL INFORMATION

Our fabric is ISO 9000 certified. We perform regular tests on our production process in order to verify and check that our quality parameters are stable for each production.

**LINEX™** Liners should be stored in darkness within an ambient temperature (from -10°C to 30°C (10°F to 90°F)). It is the responsibility of the client/consumer to store the liners correctly.

**WARRANTY:** 2 years after delivery and 1.5 years in operation.



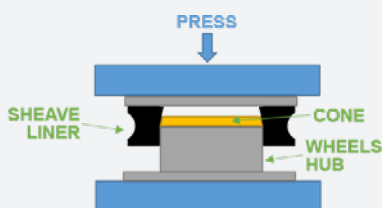
### OPTIMAL MOUNTING INSTRUCTIONS

Clean liner and sheave ring (oil and greasy deposit have to be removed).

Use specific equipment like a metal cone with de-burred edges.

Press the liner on wheel's hub. You can use soap water to lubricate the liner in order to facilitate the mounting (don't use too much).

- Don't use oil or grease to lubricate the liner
- Don't overstretch the liner
- Don't pull the liner over sharp edges



**DO NOT LUBRICATE** the rope of the lift with any lubricant or grease that are not compatible with the liners.

Inspection of the liners:

ASPECTS/PHENOMENON	FREQUENCY
Unusual abrasion	Daily
Irregularities	Daily
Carbonization	Daily
Presence of grease - Oil	Daily
Unusual acoustic sound	Daily
Hardness	Weekly (sampling)
ALL ASPECTS	Once a year

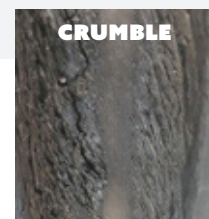
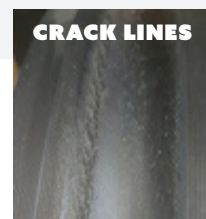
### WHEN TO CHANGE SHEAVE LINERS?

Notice that sheave liner deterioration is mainly due to load, speed of the rope and line setting.

That's why, as an example, on the same lift you could have differences of deterioration between 2 sheave liners mounted on 2 different pylons.

The main case of deterioration is «thermal corrosion». Because of the load and the speed of the rope the rubber warm itself up. Maximum heat is detected under the surface of the groove. The cycle warm up and get cold make the rubber getting harder. First signs of hardening process are crack lines that mostly appear on sides of the groove. Then these crack lines become bigger and more numerous. Final step is the deterioration of bottom of the groove and the rubber crumbles. Most of time there is time between apparition of crack lines and crumble. Nevertheless, in some cases the process can occur very quickly. Check in priority overloaded wheels combined with high speed rope.

Another case of deterioration is «mechanical abrasion». This could be caused by a sheave liner not mounted correctly.



It is very useful to record all information about each liners:

- Date of inspection
- Operating hours
- Results of inspection
- Date of changing
- Incidents

# LINEX™

## PRODUCT INFORMATION



**LINEX™** liners are designed and manufactured to equip and protect sheaves of chairlifts, gondolas, cable cars, funiculars, 3S, etc...

**LINEX™** liners are not molded and are closed ring only (we do not manufacture open ring liners yet).

Our high-quality manufacturing process allows for the production of any ring dimension and groove shape. We can even make a customized ring with a customize groove if needed.

**LINEX™** liners are manufactured with a perfectly uniform material structure due to the extreme precision we use with regards to rubber in our manufacturing process.

Our background in precision engineered rubber allows to manipulate the molecular chains of the rubber so that they are oriented in an optimal way for the conditions for industrial uses.

**LINEX™** liners provide the following advantages:

- Integrated textile layer that provides compression on the sheave
- Long life (even for high speed lifts) - in general between 4-6 years
- Stability and thermic resistance (LINEX™ Liners will retain structural properties in spite of thermal variations brought on by routine lift operations)
- Flexibility and visco-elastic properties for a wide-range of temperatures. Our liners will preserve their elastic properties in spite of these temperatures
- Absorption capacities (this is important for absorbing vibrations generated by the rope)
- High resistance to wear and tear

Our fabric is ISO 9000 certified. We perform regular tests on our production process in order to verify and check that our quality parameters are stable for each production.

Our **Linex™** sheave liners are produced with a dedication to automation (we utilise CNC machines in our production process). We also have a dedicated test process to simulate the life product cycle of a sheave liner.





---

## **Matt McBride**

**Phone number:**

(404)-977-2418

**Email address:**

[sales@chameleonparts.com](mailto:sales@chameleonparts.com)

**Address:**

Chameleon, Inc.  
111 Petrol Point, Suite 201  
Peachtree City, Georgia 30269  
U.S.A.